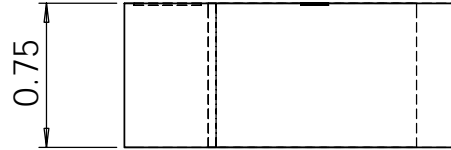
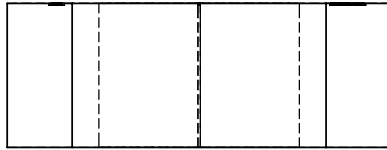


		REVISIONS		
ZONE	REV.	DESCRIPTION	DATE	APPROVED
	B	Added label and chamfer note	5/26/05	AO
	C	Added serial # engraving & note to use lathe for thread	6/7/06	AO

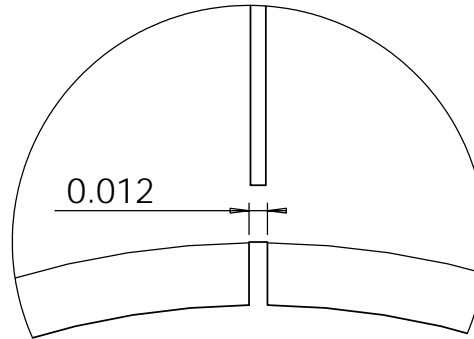
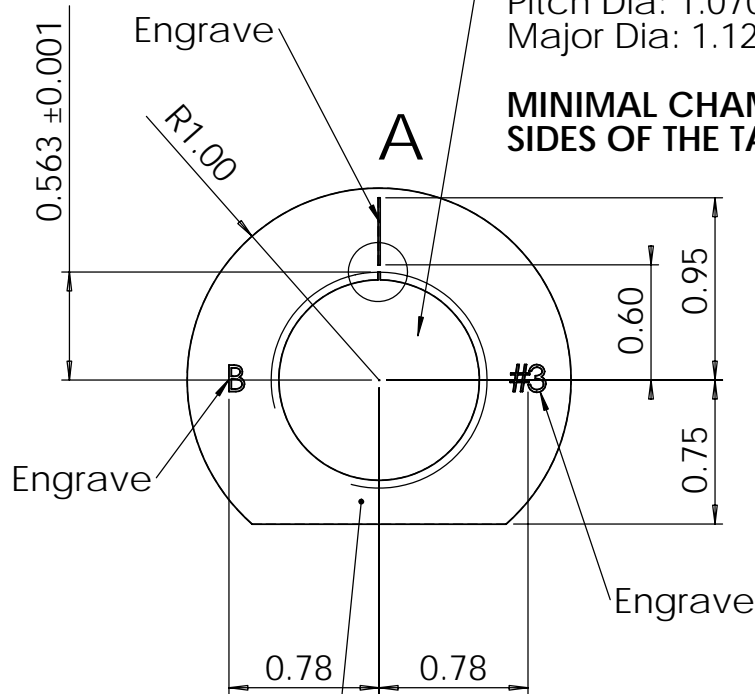


SINGLE POINT TURN ID AND
THREAD! DO NOT USE THREADMILL!

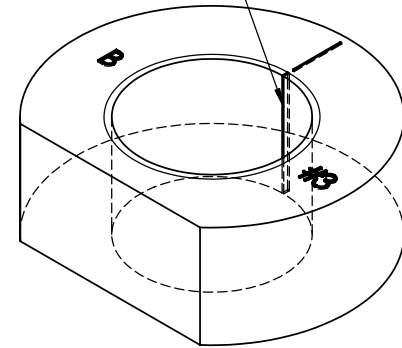
Tap 1.125-12UNF-2B
Minor Dia: 1.035-1.053
Pitch Dia: 1.0709-1.0787
Major Dia: 1.125 MINIMUM

CUT NOTCH 0.12" WIDE x 0.041" DEEP
MUST BE BURR FREE, USE EDM. A GO
THREAD GAGE MUST ROTATE SMOOTHLY
FULL LENGTH OF THREAD.

MINIMAL CHAMFER ON BOTH
SIDES OF THE TAPPED HOLE!



A (8 : 1)



Engrave serial #

PROPRIETARY AND CONFIDENTIAL
THE INFORMATION CONTAINED IN THIS
DRAWING IS THE SOLE PROPERTY OF
MCU DESIGNS. ANY REPRODUCTION
IN PART OR AS A WHOLE WITHOUT THE
WRITTEN PERMISSION OF MCU DESIGNS
IS PROHIBITED.

		DIMENSIONS ARE IN INCHES TOLERANCES: FRACTIONAL ± 1/32 ANGULAR: MACH ± BEND ± TWO PLACE DECIMAL ± 0.02 THREE PLACE DECIMAL ± 0.003		NAME AO	DATE 4/10/05	MCU Designs VP Calibration Standard SCBA #3
		MATERIAL 6061 Aluminum		CHECKED		
		FINISH Anodize Black		ENG APPR.		
		APPLICATION DO NOT SCALE DRAWING		MFG APPR.		
NEXT ASSY	USED ON			Q.A.		SCALE: 1:1
				COMMENTS: BREAK ALL EXTERNAL SHARP EDGES UNLESS NOTED. ENGRAVING FONT IS NOT IMPORTANT. USE 1/16" BALL END MILL, 0.01" DEEP.		
		SIZE A	DWG. NO. VP-3001	REV. C		SHEET 1 OF 1